

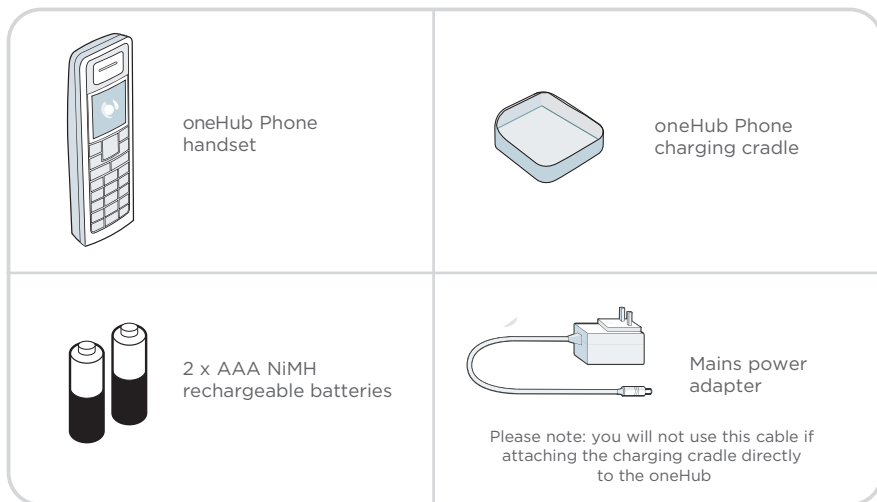
1 Setup your handset



Thank you for purchasing an additional oneHub handset. Before you can use your handset it must be paired with your oneHub. Please ensure your oneHub is setup and the 'Phone' light is a steady green before attempting the handset pairing process

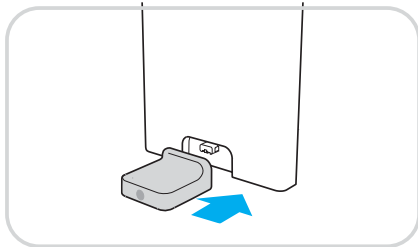
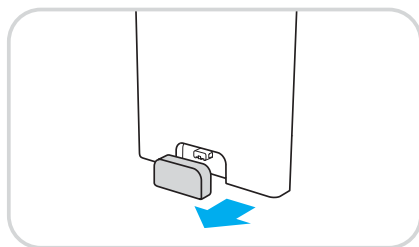


Locate the following items from your oneHub handset package:



Slide open the battery compartment on the back of your handset. Insert the 2 x AAA batteries supplied. Slide back the cover to close. In order to maximise battery life, please charge the handset for 24 hours before use.

To register your handset, you will need to place it in a charging cradle connected to the front of your oneHub as shown below. Once registered, you may keep the cradle where it is, or locate your handset anywhere in your home using the cradle and the mains power adapter to keep the handset charged.

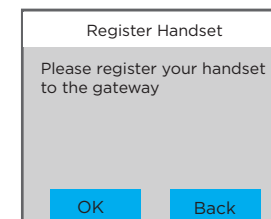


2 Register your handset

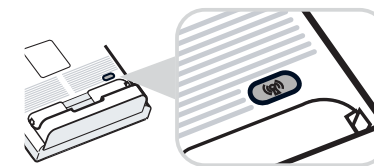


To register a new handset, you will need to place it in a cradle connected to the front of the oneHub (step 3 below). Once registered, you can move the cradle to a place more suitable if you wish.

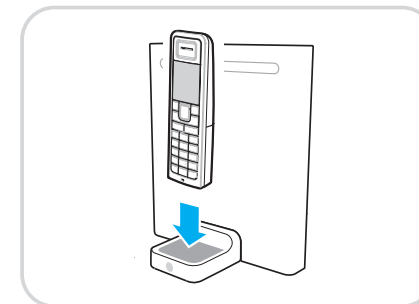
- 1 If the handset is not powered on, press the red key. You will see 'Please register your handset to the gateway' displayed on the screen. Press 'OK'



- 2 Press and hold the wireless button on the back of the oneHub for 3 seconds (the phone light on the front of the oneHub will flash). Don't press the button for more than 3 seconds or you might reset the oneHub. You have 90 seconds to pair your handset



- 3 Place the handset in the cradle attached to the oneHub. This will complete the registration process



Your handset is ready for use

If you are experiencing problems, please see the troubleshooting section of the oneHub installation guide or call our help desk at 1300 305 000

Go to <http://www.engin.com.au/help/oneHub> for more information on your oneHub and for advanced tips & troubleshooting