

# Linksys Wireless Broadband Router set up guide – model WRT54GP2

## Step 1.

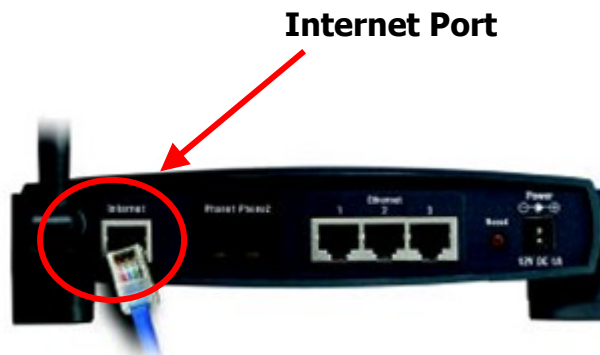
Ensure all of your hardware is turned off, including the computer and modem.

## Step 2.

Unplug the existing Ethernet cable from your computer, leaving the other end still connected to your modem.

## Step 3.

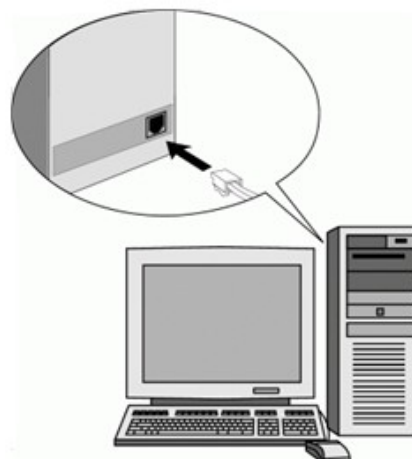
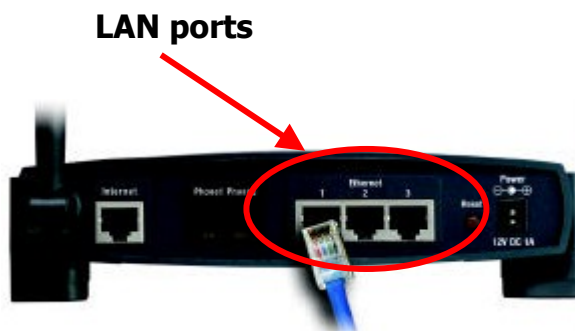
Plug the unattached end of the Ethernet cable into the Internet Port of your new router.



*(The router should now be connected to the modem via the Ethernet cable)*

## Step 4.

Using the Ethernet cable that came with the router connect one end into either LAN Port 1, 2, or 3 on the back. The other end of the cable is to be plugged into the Ethernet port on your computer.



## Step 5.

Unplug your existing telephone handset from the wall socket.  
Reconnect your telephone into phone port 1 on the back of the router.



## Step 6.

Connect the power supply and switch the device on.



Now Switch on your computer and modem.

## Step 7.

Open an Internet Explorer web browser on your computer and enter  
192.168.15.1 into the address bar



## Step 8.

Enter your user name and password.



Enter Network Password

Please type your user name and password.

Site: 192.168.1.1

Realm: Linksys WRT54GP2

User Name:

Password:

Save this password in your password list

OK Cancel

## Step 9.

Select 'obtain IP automatically' (DHCP), click save.



LINKSYS  
A Division of Cisco Systems, Inc.

Windows Firewall Enabled Router WRT54GP2

Setup

Internet Connection Type:

Optional Settings (enabled by access point)

Internet Setup

Router IP

LAN IP Address: 192.168.1.1

Subnet Mask: 255.255.255.0

LAN DHCP Server:  Enable  Disable

Start IP Address: 192.168.1.100

Number of Addresses: 100

DHCP Address Range: 192.168.1.100 to 192.168.1.199

DHCP Lease Time: 14400 minutes (Configure and Help)

DNS 1:

DNS 2:

DNS 3:

DNS 4:

Time Setting

Time Zone:

Save Settings Cancel Changes

## Step 10.

Select PPPoE from the drop down box; enter your user name and password provided by your ISP (Internet Service Provider). Select 'keep alive', click save.

PPPoE

User Name:

Password:

Service Name:

Connect on Demand: Max Idle Time  Min.

Keep Alive: Redial Period  Sec.

Select keep alive

## Step 11.

Unplug the power supply to your modem, wait five (5) seconds and reconnect the power supply (wait for the lights to settle). Unplug the power supply to the router, wait five (5) seconds and reconnect the power supply.

## Step 12.

Perform a test to confirm your internet connection is active, enter a web address into the web browser on your computer.



### Step 13.

Phone port one on the router, should now display a light, located at the front of the device.

Pick up the handset of your telephone and listen for a strong flat tone (this is the engine dial tone, it is a little different to what you are used to)



**Phone port lights**

*If the phone port light is not present or there is no dial tone, please contact [engin on 1300 305 000](tel:1300305000) as the device may require a configuration file to be regenerated.*

Alternatively go to our live chat service:

<http://www.engin.com.au/help/LiveChat.aspx>

To better assist you, please have ready:

1. Your engin account number or engin phone number
2. The IP address of your engin voice box
3. The make and model of your modem and router